

City Planning

Did you know that the proposed development plan for Milton Keynes, Plan:MK prepared by Milton Keynes Council, shows that 26,500 new homes will be built by 2031? Also, 326 acres of land will be developed for employment use such as warehousing, offices and industry.



Recipe

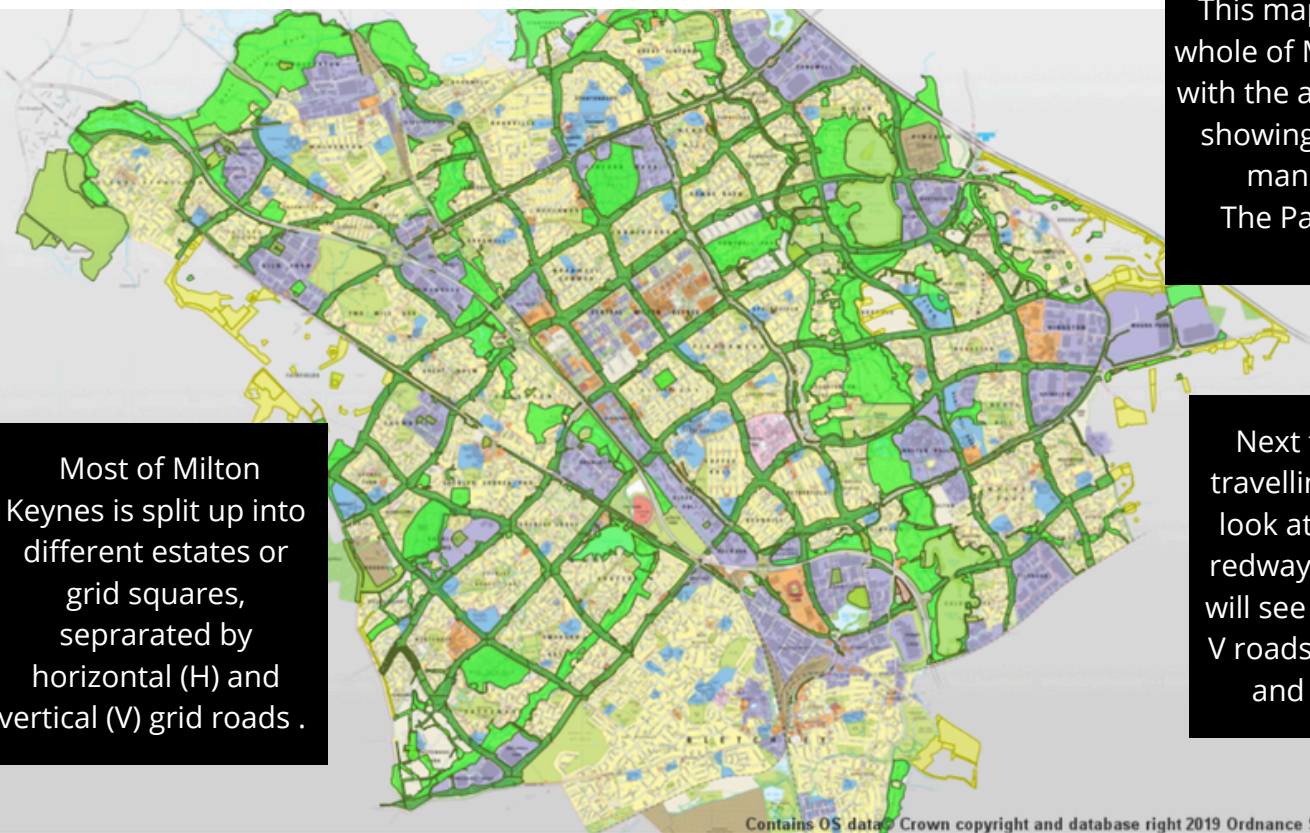
All of this development requires careful planning to ensure that the right mix of houses, industry and leisure spaces are created in each area, whilst also taking into account the local ecology, historical features, natural land forms and flood defenses. It's a bit like baking a cake - you need to mix the right ingredients in the correct proportions to get the perfect taste!



This map shows the whole of Milton Keynes with the areas in green showing the spaces managed by The Parks Trust.

Most of Milton Keynes is split up into different estates or grid squares, separated by horizontal (H) and vertical (V) grid roads.

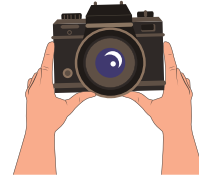
Next time you are travelling around MK, look at the road and redway signs and you will see that the H and V roads are all named and numbered.



Contains OS data © Crown copyright and database right 2019 Ordnance Survey 100050351

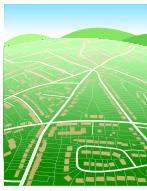
In this project, you get to be a city planner. You will review an existing grid square and design a new estate!

Reviewing where you live



To help you think about what a new grid square would need, have a look at what is around you. Take a walk around your local area and make a note of the different features. You could do this by taking photos on your phone and use these to create an annotated collage or you could make a list with additional notes.

There are several parts to this survey of your local area so you might find it easier to split the tasks across several visits e.g. one day look at land use, another day look at animal habitats etc.



Make a note of the different way that land is used in your local area. Try organising these features into different categories e.g residential, business, leisure.

Land Use

If you can, try to estimate what percentage of the area is taken up by each type of land use. If you have access to a Milton Keynes City Atlas, you may find this useful as it will give you a plan view of the area and different types of land use will be marked in different colours.



Alternatively, using an online map such as Google Maps can help you to see a large area from above.

Spend some time focusing on the parks and green space in your local area.

Are there any water bodies? Do these areas have water in them all year round? Are they part of a sustainable urban drainage system (SUDS) that is designed to have changing water levels? These hold more water during times of heavy rainfall to prevent the water flooding nearby homes. Are there any wooded areas?

Can you identify any of the tree species?

Are there any play parks or sports fields?

Think about the different animal habitats – grassland, hedgerow, water and woodland. Can you find an example of each of these in your local area? Why are they so important?



Green space and parks



Environmental Sustainability



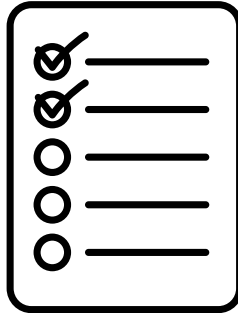
What examples can you find in your local area of environmental sustainability? This could be electric car charging points, solar panels, recycling bins or water butts. What other examples can you think of?

As you are looking around, think about what things you might like to include in your new grid square. Will you add any specific features to the houses for example?

Do you know if any of the businesses in your local area are focused on being environmentally sustainable? Will this be a requirement for businesses wanting to move in to your new grid square?

Future planning, over to you...

Now it's time to start thinking about what you want to include in your new grid square. It's a blank slate so you can add whatever you want!



Make a list of the things to include in order of priority. Use your knowledge of Milton Keynes and your review of your local area to decide what facilities you want to include.

Things to think about...

- The undeveloped land is currently all green space, so how can you make the most of this in your plan?
- Will the facilities be for local residents or will there be something unique that people from other areas of Milton Keynes and further afield will travel to visit?
- Are there certain types of businesses that you want to attract to the area e.g. refill shops?
- How will you keep it environmentally sustainable?



Presenting your ideas...

How you share your ideas for your new grid square is completely up to you! Use your imagination to bring it to life. You could..

- Make a 3D model showing how the land will be used in the different areas of the estate.
- Draw an ariel plan with clear labels and annotation.
- Record a TV advert for your new estate telling people why they should move there.
- Make an advertising poster to promote the area explaining how it is environmentally sustainable.

We would love you to share your creations with us @theparkstrust

