



The **Parks Trust**
MILTON KEYNES

Tree ID Guide

Discover the trees that make Milton Keynes so green!



We are the charity caring for your parks,
woodlands and lakes forever.

www.theparkstrust.com



The Wonder of Trees

In addition to providing oxygen, storing CO₂, stabilising the soil, and providing habitats for wildlife, trees also make our home beautiful and have a positive effect on our mental health.

Milton Keynes has millions of trees. The Parks Trust, the charity that cares for 6,000 acres of local green spaces, looks after many of them, including those in our three ancient woodlands.

We have produced this ID guide to encourage you to get out and explore the trees in our parks. The trees on the following pages are the most common species but you are likely to find many more when you start looking!

Caring For Your Woodlands & Plantations

To help the woodlands and plantations stay healthy and safe, The Parks Trust's Operations Team and our contractors must manage millions of trees. This sometimes involves thinning (removing some trees to create enough space and light for others to thrive), removing diseased or weakened trees (such as those effected by Ash Dieback), and coppicing (cutting shrubs to their base for them to rejuvenate to create understorey). We also remove some to retain site lines for the safety of the public.

To replace those removed and add to the landscape, we plant on average 40,000 new trees and shrubs each year. This is set to increase in the coming years as Milton Keynes grows.

To find out more about our tree work visit:
www.theparkstrust.com/operationalwork

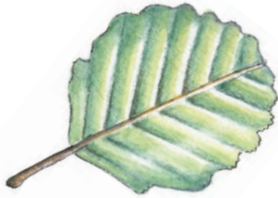


Tree Identification: Leaves

Look carefully at the shape, edge, colour and pattern of the leaves. The texture will also help guide you. The sizes below give you a rough idea of the length of mature leaves.

ALDER

10cm



SILVER BIRCH

6cm



ASH

30cm



BLACKTHORN

4cm



ASPEN

8cm



WILD CHERRY

15cm



HORSE CHESTNUT

30cm



HORNBEAM

10cm



DOGWOOD

9cm



HOLLY

10cm



HAWTHORN

5cm



SMALL LEAVED LIME

7.5cm



HAZEL

10cm



WILD SERVICE TREE

12cm



FIELD MAPLE

10cm



LONDON PLANE

20cm



NORWAY MAPLE

17cm



BLACK POPLAR

10cm



ENGLISH OAK

12cm



WHITE POPLAR

10cm



SESSILE OAK

12cm



GREY POPLAR

7.5cm



ROWAN

20cm



GOAT WILLOW

10cm



SYCAMORE

15cm



WEeping WILLOW

12cm



WHITEBEAM

12cm



YEW

3cm



CRACK WILLOW

15cm





Howe Park Wood

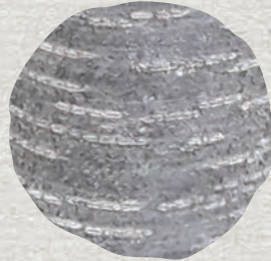
Tree Identification: Bark

Identifying trees by their bark can be difficult because it can change dramatically as a tree matures. Below are some of the most common and easily identifiable barks in our parks.

ALDER



WILD CHERRY



ASH



HORSE CHESTNUT



SILVER BIRCH



HAWTHORN



Did you know?

Oak trees support more life than any other native tree. Oaks provide food for many species of birds, minibeasts, mammals and fungi.

NORWAY MAPLE



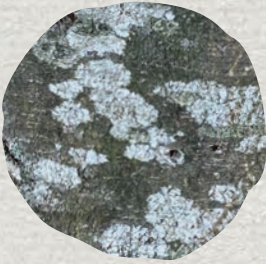
SMALL LEAVED LIME



OAK



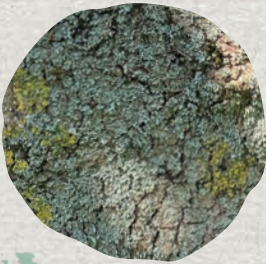
WILD SERVICE TREE



LONDON PLANE



FIELD MAPLE



BLACK POPLAR



SYCAMORE



WHITEBEAM



CRACK WILLOW



WEeping WILLOW





Tree Cathedral

Tree Identification: Silhouettes

Stand back from the tree and have a look at its shape. Remember, trees that have been managed can look very different. For example, we usually coppice hazel which means it will often be lower to the ground and bushier (have multiple stems) to create an understorey.

ALDER



CRACK WILLOW



FIR



APPLE



ELM



HAWTHORN



ASH

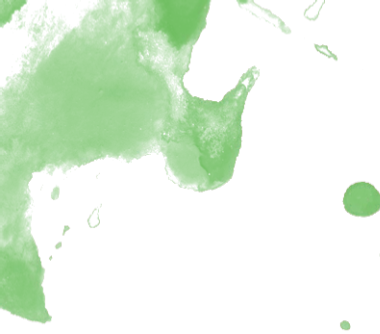


ENGLISH OAK



HAZEL





HORNBEAM



LIME



ROWAN



HORSE CHESTNUT



LOMBARDY POPLAR



SCOTS PINE



LARCH

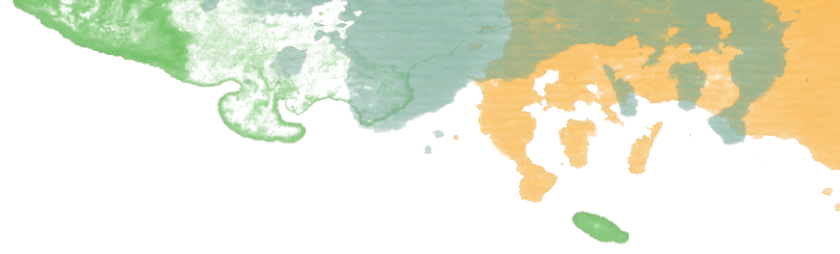


PLANE



SILVER BIRCH





SPRUCE



WALNUT



WHITE WILLOW



SYCAMORE



WEeping WILLOW



YEw



Did you know?

Shapes of trees can be deceptive. An oak that grows in an open field will be a very different shape from one that is in a wood due to less competition for light and space.

Tree Identification: Buds

We have included a few of the more easily-identifiable buds to get you started.
Buds develop into shoots, flowers or leaves during spring.

ALDER



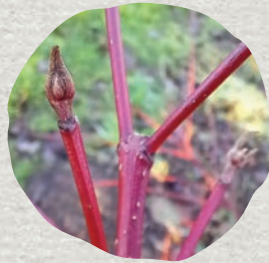
BLACKTHORN



ASH



DOGWOOD



SILVER BIRCH



ELDER



HAWTHORN



FIELD MAPLE



HAZEL



NORWAY MAPLE



HORNBEAM



ENGLISH OAK



LIME



SYCAMORE





Activities

Why not try some of the activities below to help you learn more about trees?

- Visit the same tree in each season and see how it has changed
- Take a photo of your favourite tree and tag us
- Take a bark and leaf rubbing
- Close your eyes and listen to the sound of the tree
- Record a tree on Treezilla – the OU tree recording system
<https://treezilla.org/about>
- Record the different wildlife that lives on a tree
- Estimate the height of the tree - see our website for hints about how to do this!

We have created free resources to help you explore the parks cared for by The Parks Trust: www.theparkstrust.com/resources

To find out more about our work with trees across Milton Keynes, visit our website: www.theparkstrust.com/landscapemanagement



20cm

19cm

18cm

17cm

16cm

15cm

14cm

13cm

12cm

11cm

10cm

9cm

8cm

7cm

6cm

5cm

4cm

3cm

2cm

1cm

0

Did you know The Parks Trust plants on average
40,000 trees and shrubs every year?



www.theparkstrust.com